



Working to Enhance Sickle Cell Anemia Testing in Accra, Ghana with the Hands-on Training and Equipment Donation

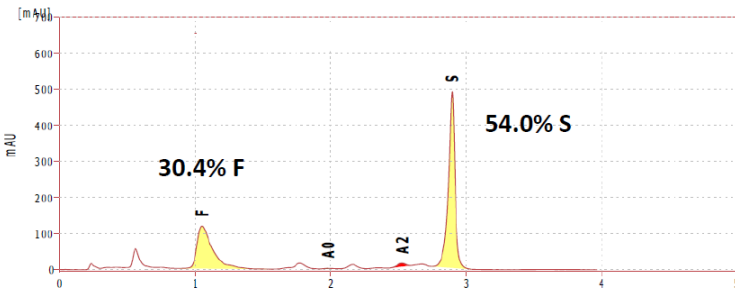
PolyLC Inc. is delighted to report on our recent trip to the Noguchi Memorial Institute for Medical Research (NMIMR), a leading biomedical research institute in Ghana that is committed to innovative research in both communicable and non-communicable diseases.



Operational training on PolyLC Inc.'s portable HPLC analyzer the SmartLifeLC

In addition to participating in a Hydroxyurea in Sickle Cell Disease workshop sponsored by Novartis' Sickle Cell Disease Initiative, we had the pleasure of demonstrating the capabilities of our SmartLife LC. The SmartLifeLC is a portable high-performance liquid chromatography (HPLC) instrument that we specifically designed to bring down the cost per injection of sickle cell screening and hydroxyurea therapy monitoring in sub-Saharan Africa. It is designed to switch back and forth seamlessly from working in the field on a battery pack and single injection valve to working in the laboratory paired with a high volume autosampler.

Interest levels were extremely high during our demonstrations. We ran live screenings of attendees to demonstrate how quickly results could be collected and reported



Data collected during our live screening confirmed the results of an individual in hydroxyurea therapy.



Our company founder, the late Dr. Andrew J. Alpert graciously donated all the equipment and supplies we used to demonstrate our portable hemoglobin analyzer. We proudly continue to support the NMIMR as they continue to revolutionize how they collect and report SCD information.

For more information about this trip or to let us know of any upcoming collaborative SCD screening events we could take part in, please email us at: info@polylc.com

