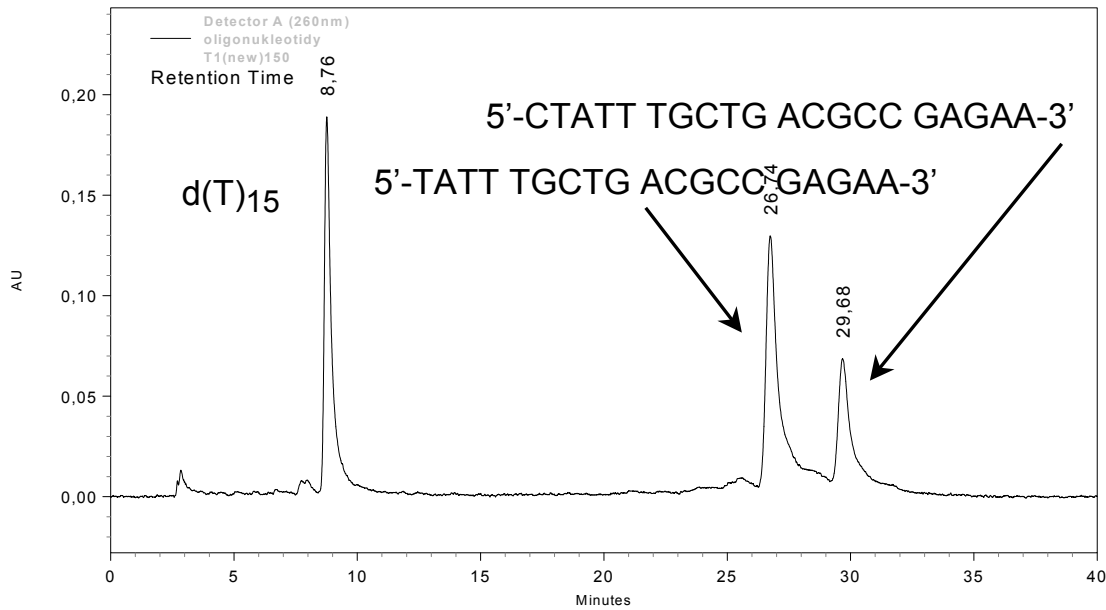


# PolyLC INC.

9151 Rumsey Road, Suite 180 • Columbia, MD 21045 USA  
 Phone: (410) 992-5400 • FAX: (410) 730-8340 • e-mail: POLYLC@aol.com

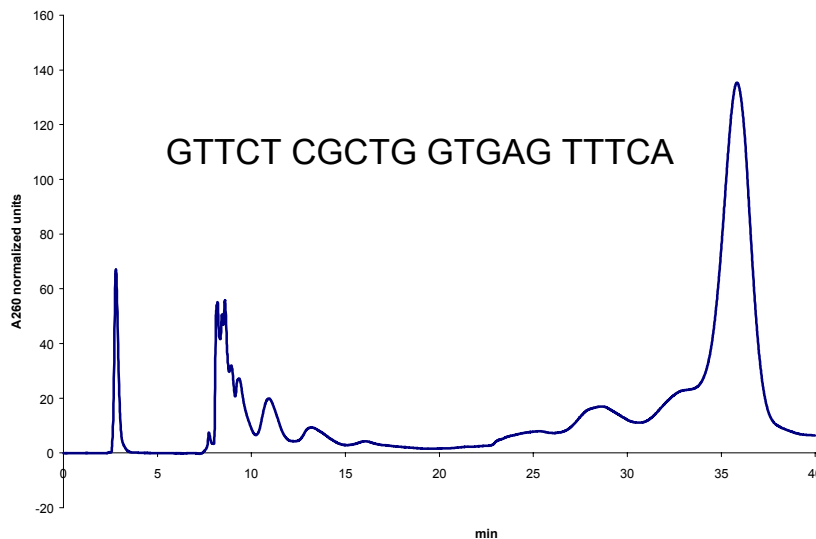
## Nucleic Acids

**Anion-exchange:** *Excellent separation of oligonucleotides by size!*



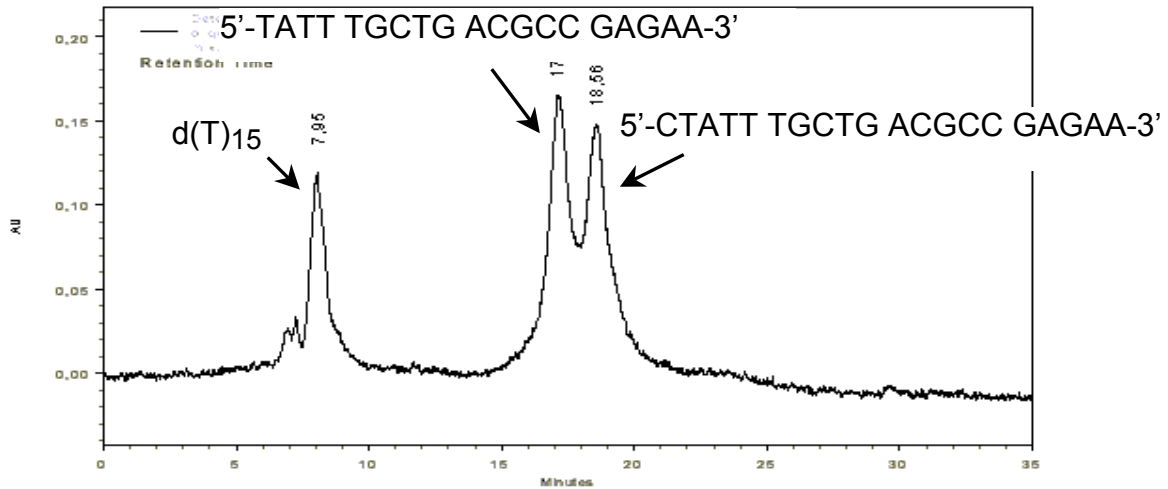
COLUMN: PolyWAX LP, 100x4.6-mm; 3  $\mu$ m, 1500-Å (item# 104WX0315)  
Mobile phase: A) 25 mM Tris-HCl, pH 8.0, with 30% ACN; B) Same + 1 M NaCl  
Gradient: 60-100% B in 50'. Flow rate: 0.5 ml/min. Temp: 60°C. Detection: A<sub>260</sub>

**Crude phosphorothioate:** *Good selectivity for failure sequences*



COLUMN: 104WX0315  
Flow rate: 0.5 ml/min  
Temp: Ambient  
Sample: 1.7  $\mu$ g/25  $\mu$ l  
Mobile Phase: A) 25 mM Tris, pH 8, with 30% ACN  
 B) 1 M NaClO<sub>4</sub> in A  
Gradient: 0-3': 0% B  
 3-4': 0-60% B  
 4-34': 60-100% B  
 34-38': 100% B

## Phosphorothioates by **Hydrophilic Interaction Chromatography**



COLUMN: PolyHYDROXYETHYL A, 200x4.6-mm; 5  $\mu$ m, 300 Å (#204HY0503)

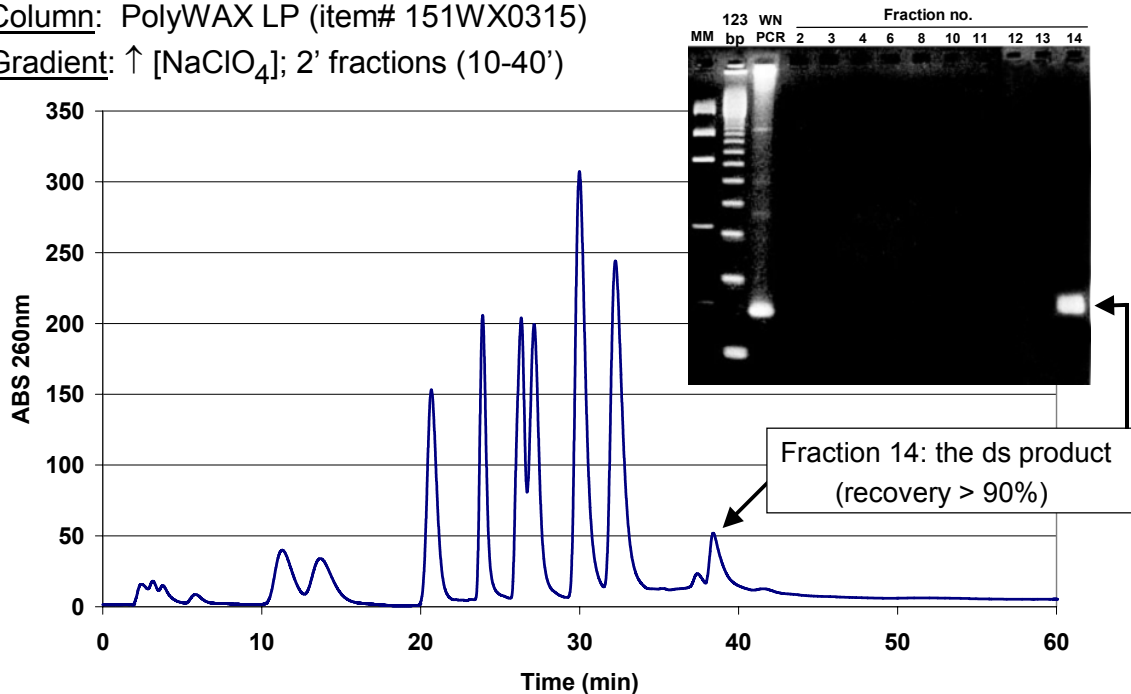
Gradient: 75-60% ACN in 100 mM TEAA

(NOTE: Phosphorothioates have optically active centers and hence broad peaks)

## Double-Stranded DNA; **PCR Reaction Mix** (West Nile Virus template; 202-bp GC-rich product)

Column: PolyWAX LP (item# 151WX0315)

Gradient:  $\uparrow$  [NaClO<sub>4</sub>]; 2' fractions (10-40')



- courtesy of Raquel Hernandez and Steevenson Nelson (North Carolina St. Univ.) -